



CoreLine Wall-mounted

WL140V LED34S/840 PSED WH

CoreLine Wall-mounted, 35.5 W, D390 mm, 3400 lm, 4000 K, DALI, IP65, EL-DC

Whether for a new building or renovation of an existing space, customers want lighting solutions that provide quality of light and substantial energy and maintenance savings. The new CoreLine Wall-mounted range of LED products can be used to replace traditional wall-mounted luminaires incorporating compact fluorescent lamps. The process of selecting, installing and maintaining is so easy – it's a simple switch.

Product data

General Information	
Light source replaceable	No
Number of gear units	1 unit
Driver included	Yes
Product family code	WL140V [Coreline Gen3 Wall Luminaire]
Lighting Technology	LED
Glow-wire test	Temperature 850 °C, duration 30 s
Flammability mark	-
CE mark	Yes
ENEC mark	ENEC mark
Warranty period	5 years
EU RoHS compliant	Yes
Type of emergency lighting battery	Lithium
Value ladder	Performance

Light Technical	
Luminous Flux	3,400 lm
Saturated Red (R9)	<50
Correlated Color Temperature (Nom)	4000 K
Luminous Efficacy (rated) (Nom)	95 lm/W
Color rendering index (CRI)	>80
Flickering value (PstLM)	1
Stroboscopic effect value (SVM)	1.6
Beam angle of light source	120 degree(s)
Light source color	840 neutral white
Optic type	Symmetrical
Luminaire light beam spread	120° x 120°
Unified glare rating CEN	25

CoreLine Wall-mounted

Operating and Electrical

Input Voltage	220-240 V
Line Frequency	50 or 60 Hz
Initial CLO power consumption	- W
Inrush current	18 A
Inrush time	0.025 ms
Power Consumption	35.5 W
Power Factor (Fraction)	0.9
Connection	Push-in connector 6-pole
Cable	-
Number of products on MCB of 16 A type B	34

Temperature

Ambient temperature range	0 to +25 °C
---------------------------	-------------

Controls and Dimming

Dimmable	Yes
Driver/power unit/transformer	Power supply unit with DALI interface, DC compatible for central emergency lighting (integrated)
Control interface	DALI
Constant light output	No

Mechanical and Housing

Housing Material	Polycarbonate
Reflector material	Polycarbonate
Optic material	Polycarbonate
Optical cover material	Polycarbonate
Fixation material	-
Housing Color	White
Optical cover finish	Opal
Overall height	85 mm
Overall diameter	390 mm

Emergency Operation

Emergency flux	350 lm
Emergency Power	3 W

Approval and Application

Ingress protection code	IP65 [Dust penetration-protected, jet-proof]
Mech. impact protection code	IK10 [20 J vandal-resistant]
Sustainability rating	-
Protection class IEC	Safety class II
Photobiological risk	Photobiological risk group 0 @200mm to EN62778
Photobiological risk specification	0.2 m

Initial Performance (IEC Compliant)

Luminous flux tolerance	+/-10%
Initial chromaticity	(0.3818,0.3797) SDCM <3
Power consumption tolerance	+/-10%

Over Time Performance (IEC Compliant)

Control gear failure rate at median useful life 50000 h	5 %
Lumen maintenance at median useful life* 50000 h	80

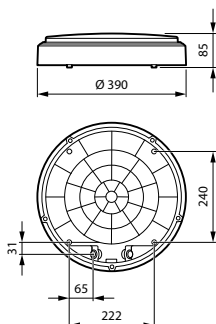
Application Conditions

Performance ambient temperature Tq	25 °C
Maximum dim level	1%
Suitable for random switching	No

Product Data

Order product name	WL140V LED34S/840 PSED WH
Full product name	WL140V LED34S/840 PSED WH
Full product code	871869997857000
Order code	97857000
Material Nr. (12NC)	910505101543
Numerator - Quantity Per Pack	1
EAN/UPC - Product/Case	8718699978570
Numerator - Packs per outer box	1
EAN/UPC - Case	8718699978570

Dimensional drawing



CoreLine Wall-mounted

